



Noekie creek V3A1II



Location

Greenstone valley, Glenorchy, Otago, New Zealand.

Character

Sunny canyon with 6 easy abseils up to 60m.

Approach by car

Drive from Queenstown to Glenorchy, go to Kinloch and follow the dirt road to the Greenstone carpark. You will have to pass some fords.

Approach on foot

Follow the Greenstone Track to the creek and look for the blue triangle marked with number 126. From there, go up and follow the animal tracks to the 650m contour. It's steep in some places but not dangerous. From the 650m contour, try to find your way into the canyon.

Water

Low flow, good after rain

Map

CB09

Catchment

0.6 km²

Anchors

Mostly single bolts - Tebylon exp3 and Tebylon ring 10mm 316L

Gear

Minimum of 2x60 meter rope

Route description

Beautiful approach, 6 easy abseils in low flow, good canyon for beginners. Sharpe edge on abseil 4.

Time

Car park to canyon: 1h (4.8km)

Canyon to start point 45min

Time in the canyon: 1h 45min

Bridge to car park: 1h

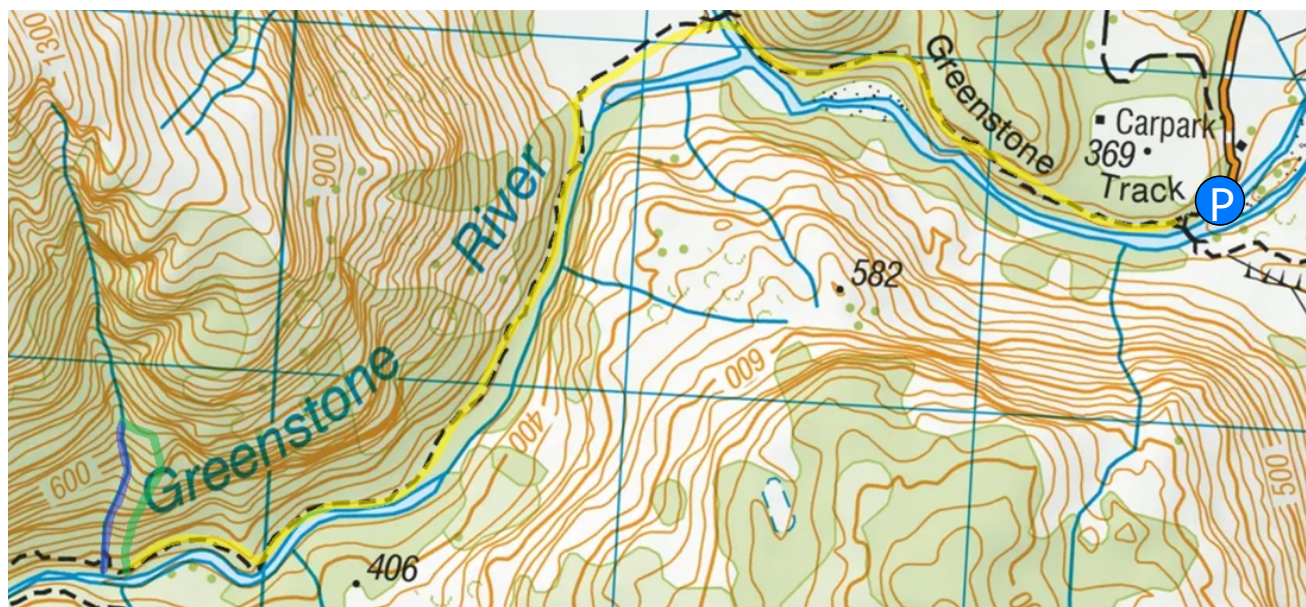
Total time: 4h 30min

Notes

First descent 18/01/2026

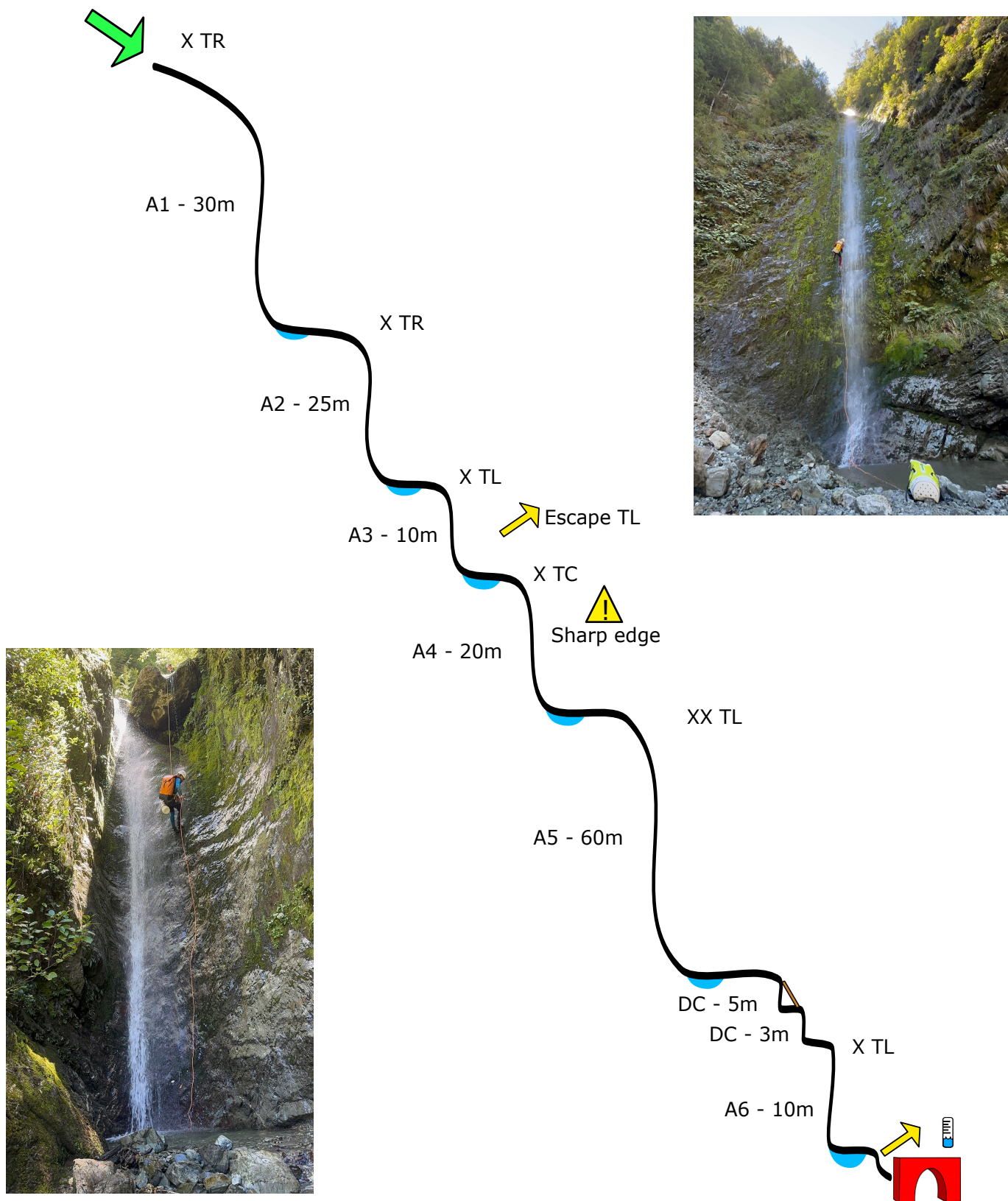
by Pepijn Hoeksema, Jaap Sikkema, Britt Joosten and Anouk Verstraaten.


The canyon is named after Anouk to celebrate her first first descent.





Noekie creek V3A1II



A person in a bright yellow jacket and blue pants is rappelling down a massive, powerful waterfall. The water is white and turbulent as it falls over dark, jagged rock formations. A red rope extends from the top left towards the person. In the background, a large, dark, triangular mountain peak is visible against a cloudy sky. The overall scene is dramatic and adventurous.

CANYONING EXPEDITION TEAM

